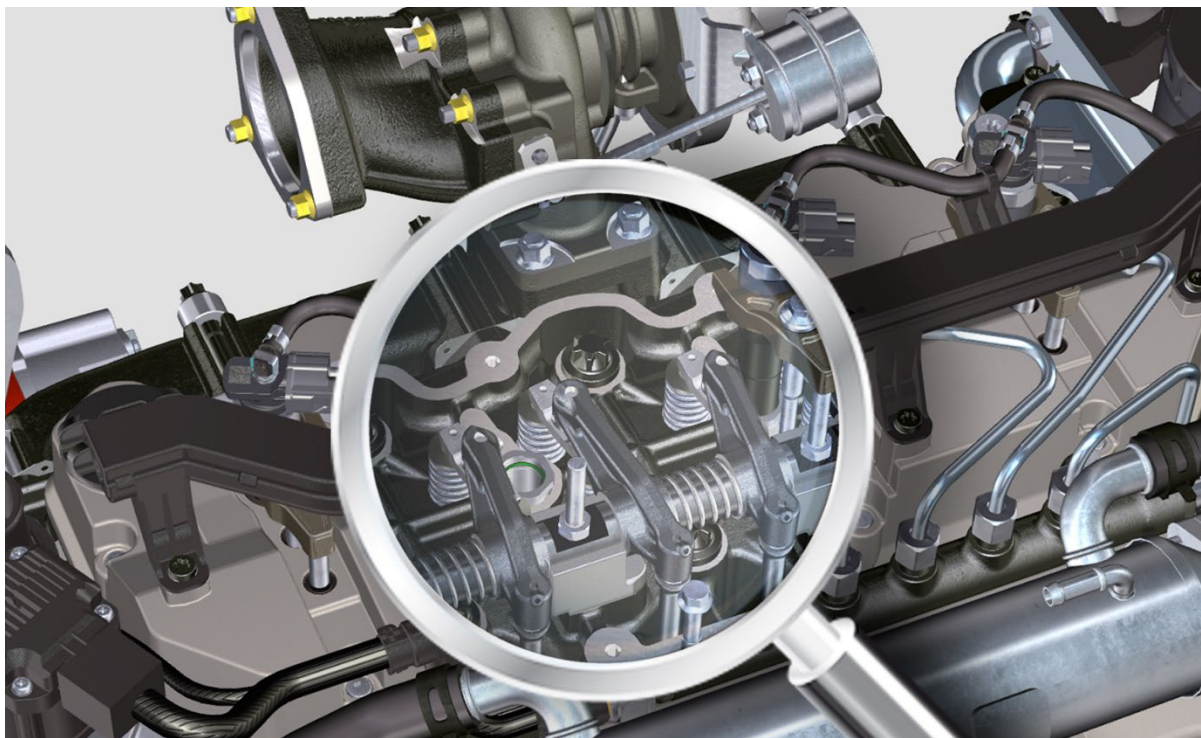


# GLOBAL PARTS LOOKUP



## USER GUIDE

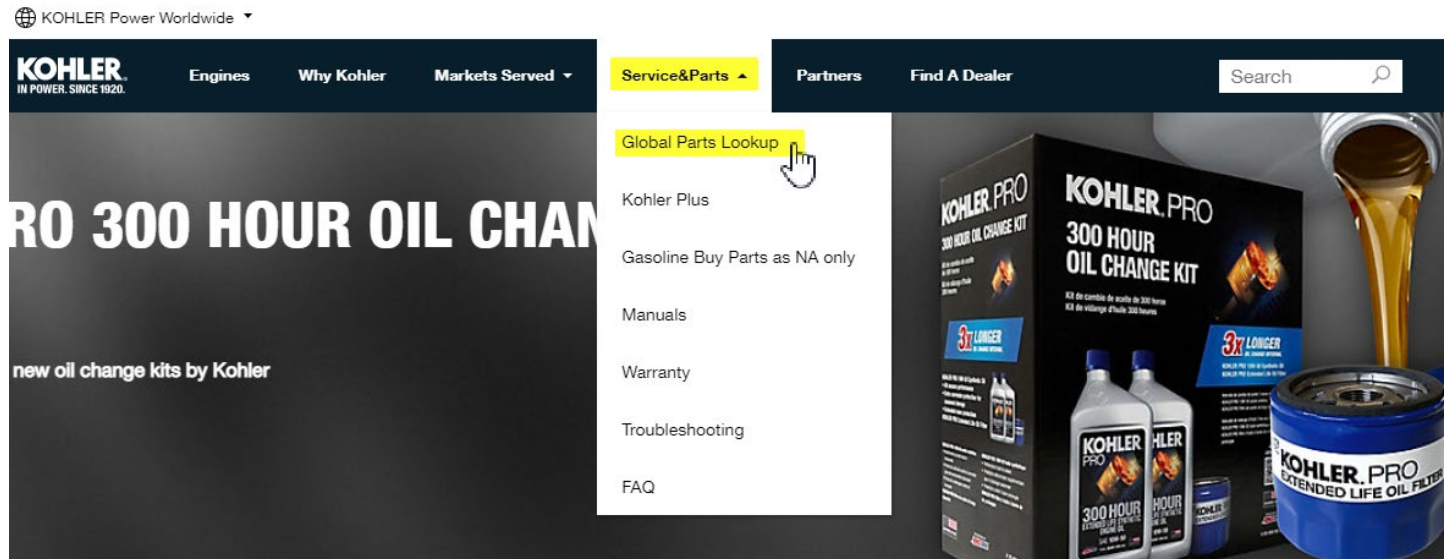
Rev.00



### Connecting to global parts lookup

Launch your internet browser and connect to <https://kohlerpower.com/en/engines> then select Partners tab.

**NOTE:** Guest Login available under Service&Parts, Global Parts Lookup



Enter your username and password in the proper boxes under the Partner Tab

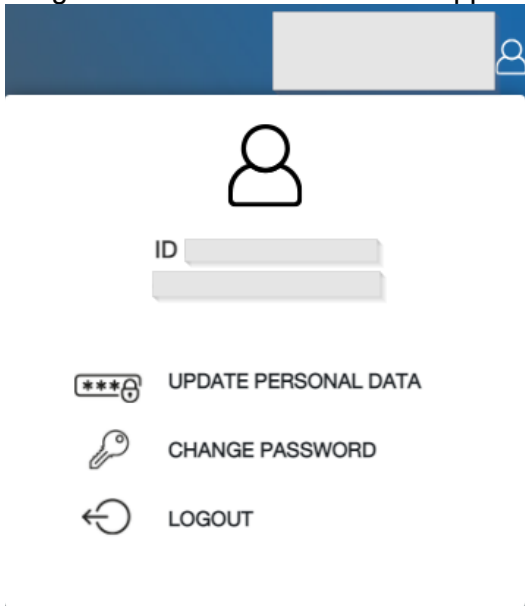
## Login

Username

Password

**LOGIN**

Login Credentials located in the upper right hand corner



A user profile dropdown menu. At the top is a grey rectangular box with a user icon on the right. Below it is a white box containing a user icon, an 'ID' label followed by a grey input field, and three options: 'UPDATE PERSONAL DATA' with a key icon, 'CHANGE PASSWORD' with a key icon, and 'LOGOUT' with a circular arrow icon.

Return to the Partners home page by clicking on the KOHLER logo located in the upper left hand



Click on “ORDER FULLFILLMENT PROCESS” section



Under SERVICE PARTS, click on “Global Parts Lookup”





Now you have access to the GLOBAL PARTS LOOKUP

## GLOBAL PARTS LOOKUP

[Gasoline Documents](#)[Diesel Documents](#)[My cart](#)

[Search for engine](#)[Search for Part](#)

INSTRUCTIONS

Serial number

Searching by the engine serial number will display the current version of the engine specification.

Diesel: search by Serial Number is preferred and more accurate.

Gasoline: search by Serial Number for engines built in the past 15 years starting with 31 or higher. For earlier serials use the Spec, Model, or OEM fields search.

Portable Generators: Serial number search is currently not available - Use the Spec, Model, or OEM fields search

SEARCH

or enter for ONE OR MORE of the following:

Specification

Model

OEM (gasoline only)

SEARCH

## Global Parts Lookup User Interface

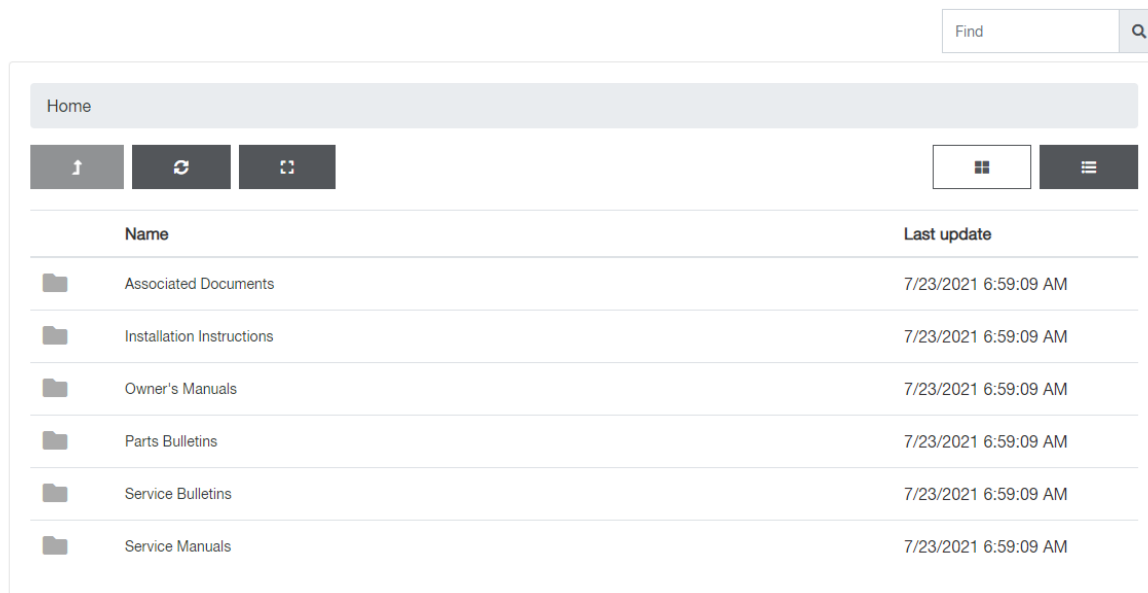
### GLOBAL PARTS LOOKUP





#### 1. Gasoline Documents:

Container of documents related to Gasoline products. By default, the list option is used

#### Gasoline documentation



Click on  to view the contents in grid or click on  to view the contents in list



Search for a document by typing keywords into “Find” box and hit

## Gasoline documentation

⏮ BACK
🖨
☐
☰

### You searched "spec"

Name	Last update
ENGINE INSPECTION DATA RECORD	3/17/2016 11:38:45 AM
II, TT-5153 KEIHIN ACCEL PUMP INSPECT DATE10/05	11/7/2005 12:54:56 PM
KIT, OIL PAN (UTILITY GEN SPEC)	5/11/2016 2:35:58 PM
PB-153 FUEL PUMP FOR M10 AND M16 SPEC	3/2/2016 7:10:15 AM
PB-228 Kohler Special Tools Program	8/6/2019 11:18:02 AM
SB-063 IDENTIFY ENGINE BY MODEL,SPEC,SERIAL#	2/27/2016 10:36:45 AM

## 2. Diesel Documents:

This is a link to I-Service portal which is a container of documents related to Diesel products

[IT](#) | [EN](#) | [DE](#) | [ES](#) | [FR](#) | [ZH](#) | [LOGOUT](#)

Reserved area

## ENGINES

All

---

DIESEL

---

MARINE

---

ENGINES OUT OF PRODUCTION

---

Model 
Serial Number 
SEARCH

**KDI-TCP 3404E5**

**KDI 3404TCR-SCR**

**KDI 3404TCR / KDI 3404 TCR HT**

**KDI 3404TM**

**KDI 2504TCR / KDI 2504TCRE5**

**KDI 2504M**

**KDI 2504TM**


**KDI 1903TCR - TCRE5 - TC**



### 3. My cart:

View the list of components added to the cart. You can change the component quantity or remove the component.

**Note:** You can download a \*.csv file (similar to an Excel file) to create an order and send it to service network. (Diesel only)

My cart 				
N°	Part #	Description	QTY	
01	ED0017801980-S	Screw	<input type="text" value="8"/>	<a href="#">REMOVE</a>
02	ED0021803020-S	DPF Filter KIT - NEW	<input type="text" value="1"/>	<a href="#">REMOVE</a>
03	ED0036302800-S	Clamp	<input type="text" value="2"/>	<a href="#">REMOVE</a>
04	ED0044001520-S	Gasket	<input type="text" value="2"/>	<a href="#">REMOVE</a>
05	ED0068001050-S	Stud	<input type="text" value="2"/>	<a href="#">REMOVE</a>
06	ED0073013050-S	Joint	<input type="text" value="2"/>	<a href="#">REMOVE</a>

[DOWNLOAD CSV](#)

#### 4. Searching Options:

“Search for Engine” there are 4 search options: (serial number, spec number, model, or OEM):  
Enter a serial number

Serial number

Searching by the engine serial number will display the current version of the engine specification.

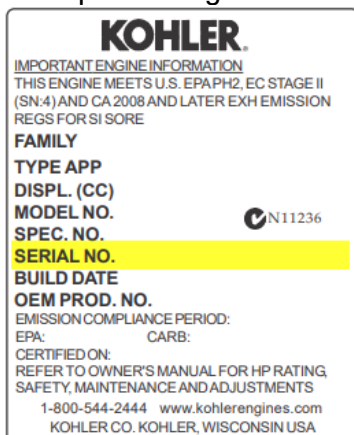
**Diesel: search by Serial Number is preferred and more accurate.**

Gasoline: search by Serial Number for engines built in the past 15 years starting with 31 or higher. For earlier serials use the Spec, Model, or OEM fields search.

Portable Generators: Serial number search is currently not available - Use the Spec, Model, or OEM fields search

SEARCH

Examples of engine labels where to find the engine serial number







Enter a specification and/or Engine Model and/or OEM (only for gasoline products)

or enter for ONE OR MORE of the following:

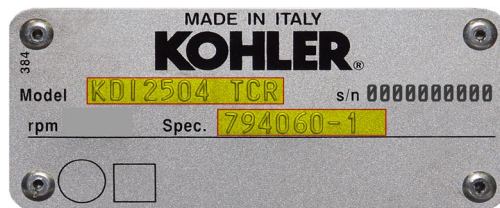
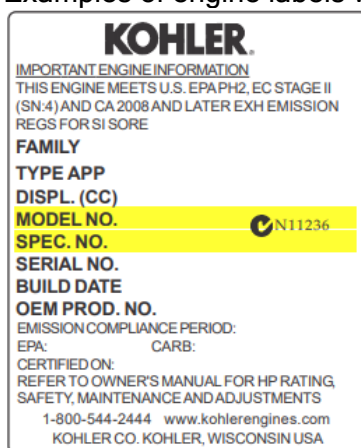
Specification

Model

OEM (gasoline only)

SEARCH

Examples of engine labels where to find the engine specification or engine model



**NOTE:** OEM search only available for Gasoline products

“Search for Part” it is possible to enter a Part Number or Part Description. In addition, you can search by Engine type (diesel/gas/marine/generator) and/or model and/or OEM (gas only).

## 5. Instructions

You can view or download this Global Parts Lookup user guide  
Using Global Parts Lookup

## Searching Features:

Enter a serial number and click on “Search”

Serial number

5001600180

Searching by the engine serial number will display the current version of the engine specification.

**Diesel: search by Serial Number is preferred and more accurate.**

Gasoline: search by Serial Number for engines built in the past 15 years starting with 31 or higher. For earlier serials use the Spec, Model, or OEM fields search.

Portable Generators: Serial number search is currently not available - Use the Spec, Model, or OEM fields search

SEARCH

or enter a specification, click on one in the list and click on “Search”

or enter for ONE OR MORE of the following:

Specification

ed271002

ED271002QC00000-01 - KDI3404TCR/22

ED271002SC00000-01 - KDI3404TCR/22

OEM (gasoline only)

SEARCH

or enter an engine model, click on one in the list and click on “Search”

or enter for ONE OR MORE of the following:

Specification

Model

KDI 3404 TM

KDI 3404 TCR

KDI 3404 TCR SCR

KDI3404 TCR STAGE V

KDI3404TCR SCR STAGE V

SEARCH

in the next page a list of engine specifications will appear, choose one in the list and the catalog will open.

476 Results for "KDI 3404 TCR":

ED271001DNPF000-01 - KDI3404TCR/22 JOHN DEERE (T3)
ED271002QC00000-01 - KDI3404TCR/22
ED271002SC00000-01 - KDI3404TCR/22
ED271001SC00000-01 - KDI3404TCR/22

or search by model and OEM (Gasoline only), engine sold to selected OEM will show

or enter for ONE OR MORE of the following:

Specification

Model

OEM (gasoline only)

SEARCH

8 Results for "ZT710 - Exmark":



ZT710-3011 - ZT710 - CONFIDANT (ZT)
ZT710-3015 - ZT710 - CONFIDANT (ZT)
ZT710-3019 - ZT710 - CONFIDANT (ZT)
ZT710-3023 - ZT710 - CONFIDANT (ZT)
ZT710-3024 - ZT710 - CONFIDANT (ZT)
ZT710-3026 - ZT710 - CONFIDANT (ZT)
ZT710-3027 - ZT710 - CONFIDANT (ZT)
ZT710-3028 - ZT710 - CONFIDANT (ZT)

## Specification Attributes

Attributes of the engine you are searching on

- the serial number you have entered if search by serial number was used
- the engine specification
- the engine description (engine model)
- Engine Power
- Engine Speed
- Status (Active = the engine is currently valid for production)
- OEM (gas engines)
- Governor spring hole location (gas engines)
- Emission code (gas engines)

## Diesel Attributes:

Serial	5001600180	Spec	ED271002SC00000-01	Description	KDI3404TCR/22		
Specification attributes							
Horse power	100,00 kW	Idle speed	1000				
High speed	2.200 rpm	Status	Active				


## Gas Attributes


Spec

SV720-0001

Description

SV720 - Courage Twin (SV)





Specification attributes


Horse power	23	OEM	MARKETING
Idle speed	RPM-1450/1750	Governor spring hole location	SPRING LOC-2
High speed	RPM-3300	Emission code	NA
Status	Inactive		


## Documents for Engine Specification

Documents tied to the engine you are searching for would be found under Specification attributes

Spec SV720-0001

Description SV720 - Courage Twin (SV)





Specification attributes

Horse power	23	OEM	MARKETING
Idle speed	RPM-1450/1750	Governor spring hole location	SPRING LOC-2
High speed	RPM-3300	Emission code	NA
Status	Inactive		

**SB-293 Courage Twin Valve Tappets**

## Catalog Exporting:



Click on the Excel icon to export the entire catalog as an Excel file.



Click on the PDF icon to export the entire catalog as a PDF file.

Manufacturer Notes: Ability to view notes is user role based for gas engines

### Manufacturer notes

Limited Warranty 2 YRS Residential/90 Days Commercial

User notes:

### User notes

SAVE

CLEAR

User can type notes about the engine and save for future viewing

**NOTE:** Users notes are only visible by person logged in - not visible for other users.


## Find a part inside the catalogue

Enter a part number or its description to find part inside the entire catalog

Find part by number or description

e.g.: entering “cartridge” the catalog shows all groups where cartridge description is located

cartridge

My cart 

"cartridge" found in:

### Engine Block



### Fuel System



### Oil circuit



### Cooling System



and selecting “Engine Block” section the catalog opens directly the page where the cartridge is listed

PISTON / CONNECTING ROD

FLYWHEEL

CRANKCASE

CAMSHAFT

TIMING SYSTEM

OIL PUMP

OIL DIPSTICK

**OIL COOLER**

OIL PRESSURE SWITCH

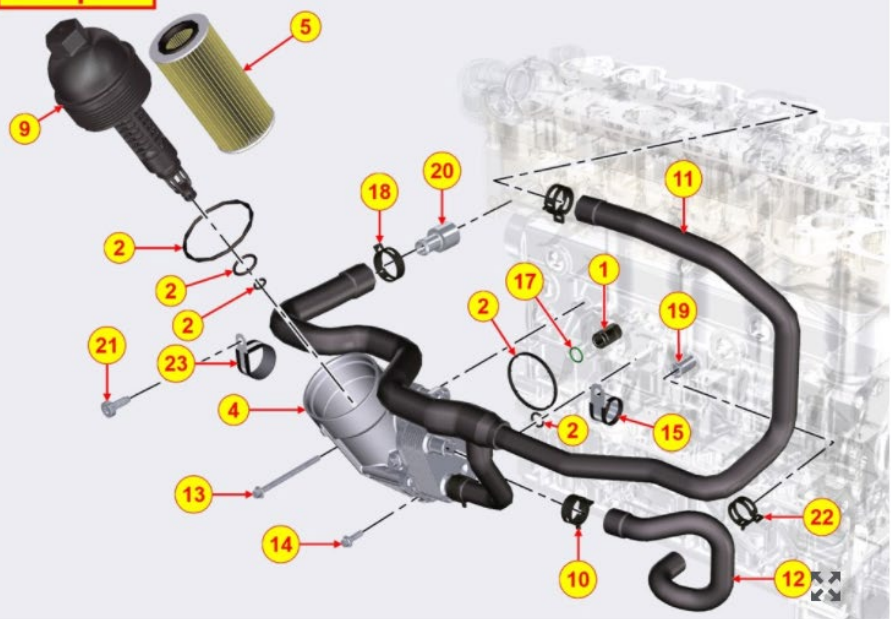
PHASE SENSOR

SPEED SENSOR - INJECTION SENSOR

OIL COOLER - Group: 8047710010






**TAB|047**



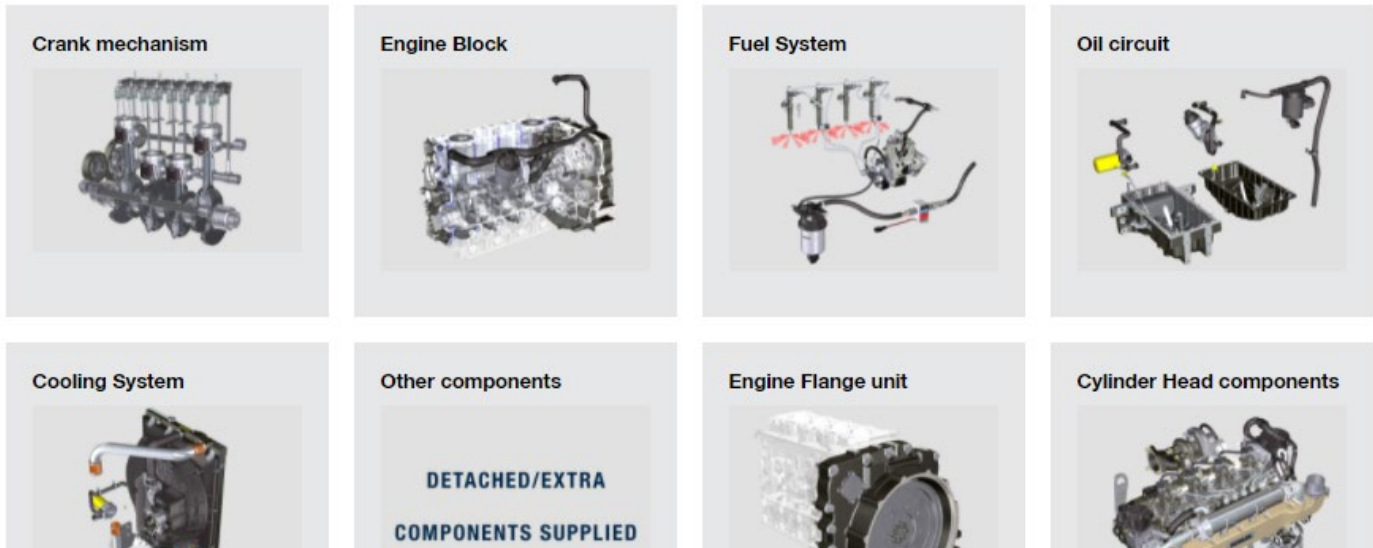


## OIL COOLER - Group: 8047710010

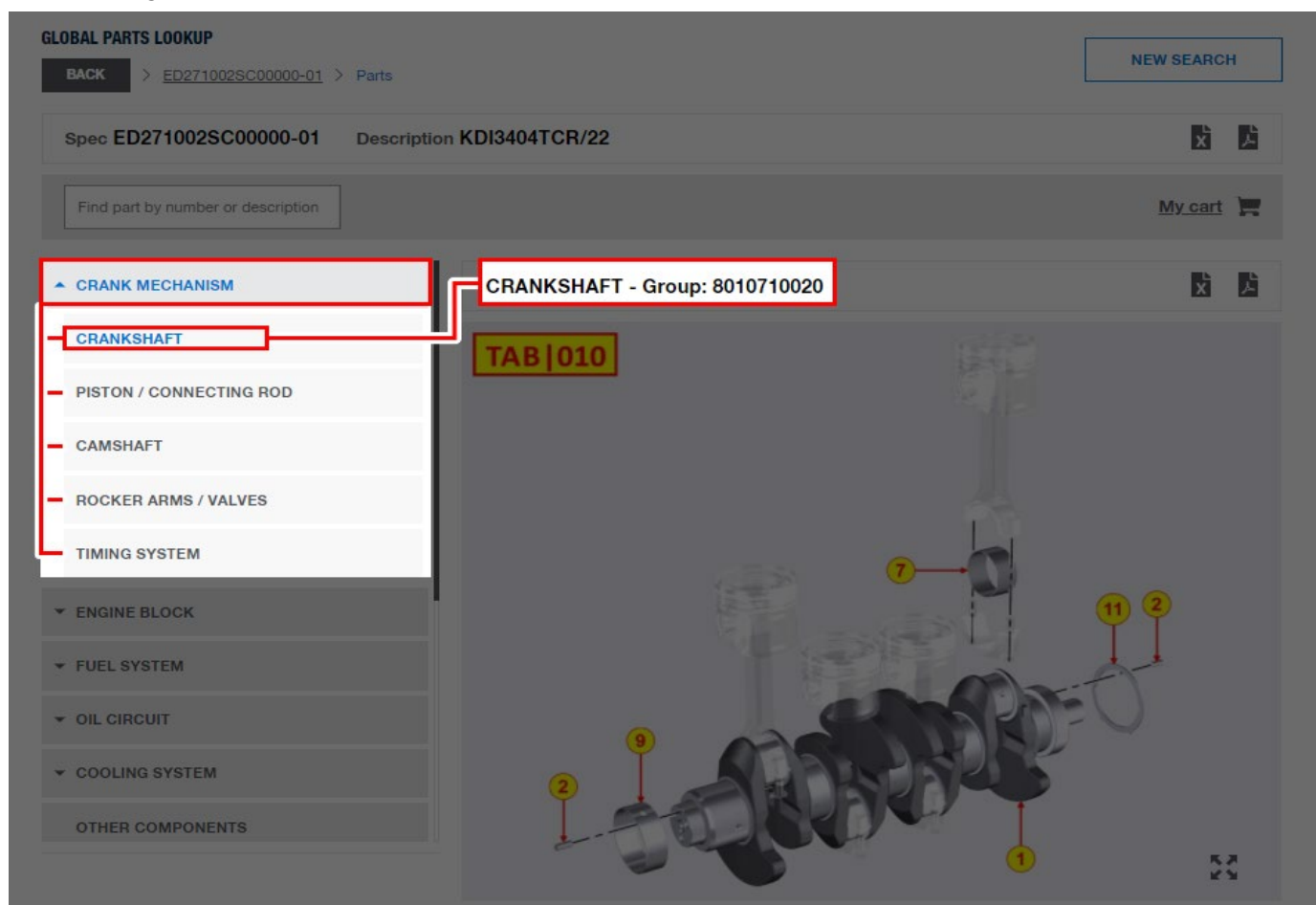
Pos	Kit	Included in	Part #	Substitution	Description	QTY	Tech info	
1			ED0072650700-S 		Joint	1		<a href="#">ADD</a>
2		(A) (B)	ED0081802150-S		Gasket kit	1		<a href="#">ADD</a>
4	A		ED0037401690-S 	<u>replaces</u>	Oil Cooler + Oil Filter	1		<a href="#">ADD</a>
5	B	(A)	ED0021750010-S 	<u>replaces</u>	OIL CARTRIDGE	1		<a href="#">ADD</a>

## Sections Views


Section Views give a visual aid to the group name to determine which group to search for components. E.G. Looking for an oil cartridge, the user could find it in the Oil Circuit section or Engine Block section because the Oil Cartridge is fitted on the Crank Case, in both cases the user will find the component they are looking for.



Selecting a section for a diesel engine, the user can open it and see subpages related to the selected section and select a page to see its part list.



## CRANKSHAFT - Group: 8010710020

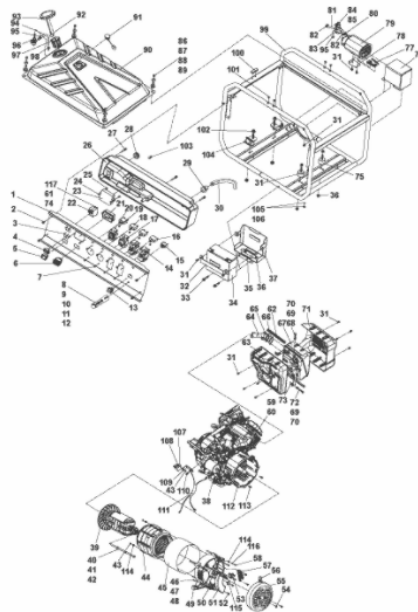
Pos	Kit	Included in	Part #	Substitution	Description	QTY	Tech info	
1	A		ED0010514910-S		Crankshaft	1		<a href="#">ADD</a>
2	(A)		ED0084000250-S 		Pin	2		<a href="#">ADD</a>
7	(A)		<a href="#">➔ See 8011710050</a>					

Selecting a portable generator product gasoline (or Lombardini Marine and EcoWind branded diesel products), the user will open the one page illustration with parts listing. If you want to see the engine used on this application you click on “see engine spec” and it goes to the illustrations and parts listing for the engine - in this case CH440-3140.

Engine spec: CH440-3140

Description: CH440 - Command PRO Single-Cyl (CH)

[SEE ENGINE SPEC](#)

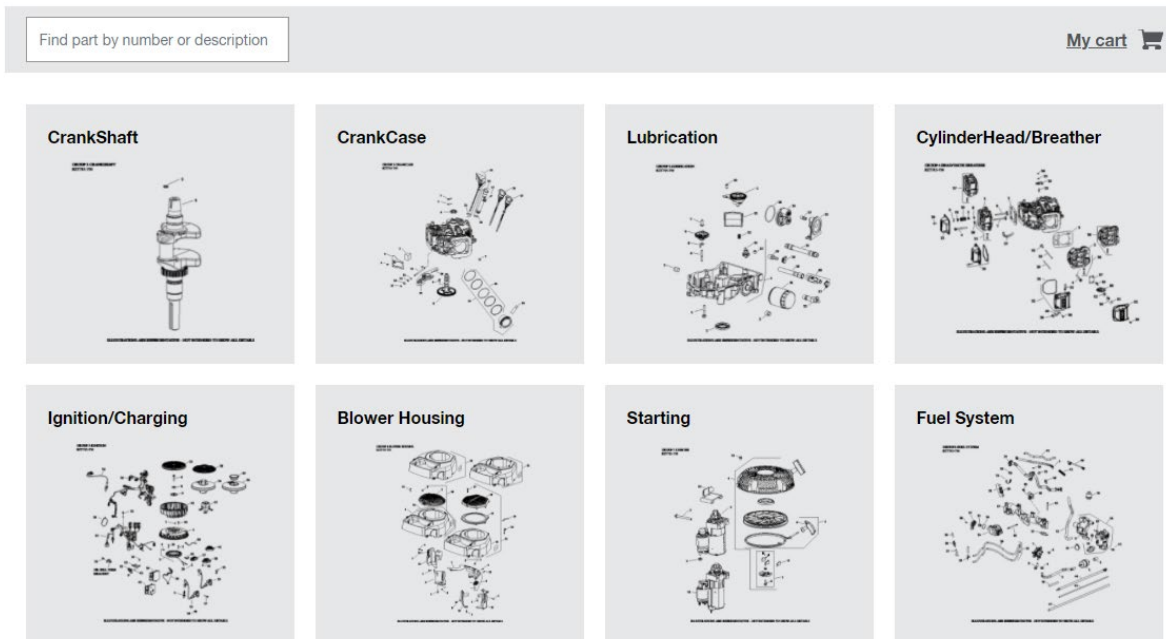


## Generator - Group: 00

[Show MSRP](#)

Pos	Kit	Included in	Part #	Substitution	Description	Note	QTY	MSRP (USD)	Tech info	
1			37 376 01-S		PANEL (GEN5.0)		1			<a href="#">ADD</a>
2			25 086 577-S		SCREW, BOLT GB5789-M6X12		4			<a href="#">ADD</a>

Selecting a section for a gas engine, the user can open it and see the group illustration and parts listing



## Exploded Views:

The exploded view shows all the components fitted on the engine, it is possible to zoom in by clicking on “enlarge



icon”

Spec **SV720-0001**    Description **SV720 - Courage Twin (SV)**

Find part by number or description

[My cart](#)

**CRANKSHAFT**

**CRANKCASE**

LUBRICATION

CYLINDERHEAD/BREATHER

IGNITION/CHARGING

BLOWER HOUSING

STARTING

FUEL SYSTEM

ENGINE CONTROLS

AIR INTAKE

IDENTIFICATION

**CrankCase**

GROUP 2-CRANKCASE  
SV720, 725, 726, 728, 730, 735, 740, 810, 820, 830, 840

**Crankshaft-Oil Pan-Oil Pump Chart**






Description	Before 2012 Straight Cut Gears & Bearing Crankshaft PTO Integral Oil Pump	2012 Straight Cut Gears with Old Style Oil Pump	New Style Oil Gears with Old Style Oil Pump
Crank	32 043 17 S	32 043 17 S	N/A
Gear Key	X 43 1 S	X 43 1 S	N/A
Flywheel	25 340 04 S	25 340 04 S	X 43 1 S
Key	32 020 05 S	32 020 05 S	32 020 05 S
Oil Pump	32 393 16 S	32 393 16 S	32 393 16 S
Oil Pan	32 014 306 S, 32 014 307 S, 32 014 313 S, 32 014 316 S	32 014 306 S, 32 014 313 S, 32 014 316 S, 32 014 308 S	32 014 306 S, 32 014 313 S, 32 014 316 S, 32 014 308 S
Oil Pan	32 393 17 S	32 393 17 S	32 393 17 S

DO NOT replace rings between  
SV 4000000 and 41000000  
until complete engine assembly








## Part List

Shows all components related to the exploded view, each position on the exploded view is listed in the Parts List as per below image.

Parts List includes the following columns:

- **Pos:** it is the position of the component referred to the exploded view.
- **KIT:** a letter in this column determines if the component is a KIT (includes other components)
- **Included in:** determines the components included in the KIT which have the same letter of the KIT component.  
E.G. the component in Pos. 1 includes the components in Pos. 5, 6, 7 and 8.
- **Part#:** indicates the service part number of the component.
- **Picture icon** : User can open a picture to see component in detail
- **Substitution:** “replaces” indicates older part number - “replaced by” indicates newer part number
- **Description:** component description
- **Note:** a note icon  gives important information for a part
- **QTY:** shows the quantity of the component fitted on the engine.
- **MSRP:** shows list price based off of user role for Gas engines only.
- **Tech info:** a “PDF icon”  or a “warning icon”  indicates that a technical information is related to the component (Installation instruction, Parts bulletins, Service bulletins, Kit contents for Gasoline products).  
NOTE: the technical information can be opened only by clicking on “PDF icon”.
- **Cart Icon** : under the cart icon, the user can add to cart components by clicking on ADD button.

## Diesel Engine parts listing

Pos	Kit	Included in	Part #	Substitution	Description	QTY	Tech info	
0			ED0082051390-S		Gasket & O-rings kit	1		<a href="#">ADD</a>
1	A		ED0092020050-S 	<a href="#">replaces</a>	KDI3404 CYLINDER HEAD ASSY STAGE V	1		<a href="#">ADD</a>
2			ED0089650050-S 	<a href="#">replaces</a>	Cap	1		<a href="#">ADD</a>
3			ED0046700160-S 		Gasket	1		<a href="#">ADD</a>
4			ED0048968790-S		Screws + washers KIT for head fixing	1		<a href="#">ADD</a>
5	(A)		ED0021101400-S 		Sleeve	4		<a href="#">ADD</a>
6	(A)		ED0012004090-S 		O-ring	8		<a href="#">ADD</a>

## Gas Engine parts listing

Pos	Kit	Included in	Part #	Substitution	Description	Note	QTY	MSRP (USD)	Tech info	
1			24 050 13-S	<a href="#">replaces</a>	FILTER, FUEL		1	8.97		<a href="#">ADD</a>
2			25 111 34-S	<a href="#">replaces</a> <a href="#">replaced by</a>	HOSE,LW PERM.FUEL 24.00*-USE 25 111 81-S		2	6.01	  	<a href="#">ADD</a>

**Page Exporting:** like Catalog exporting, it exports the group/page that the user is consulting

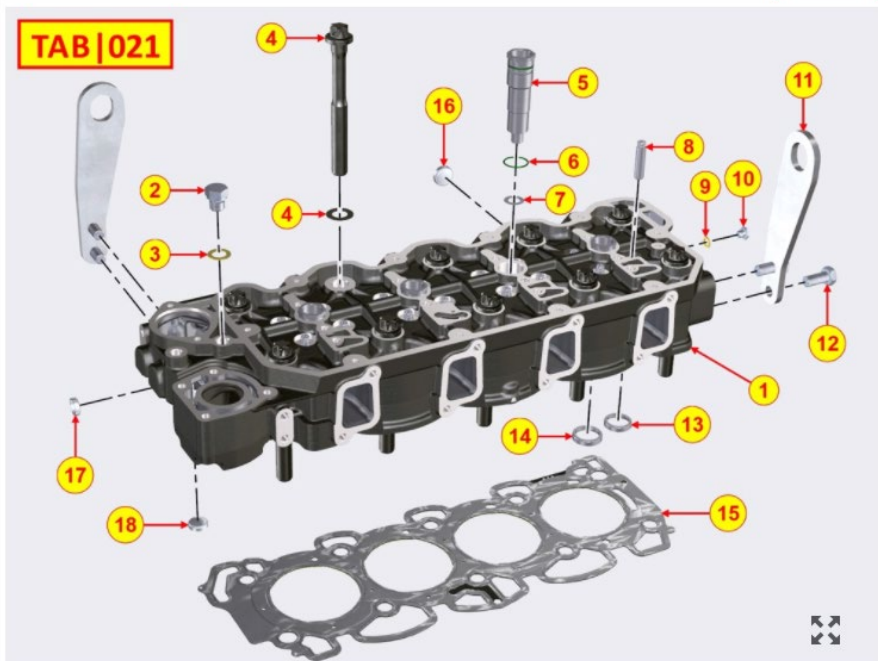


Click on the Excel icon to export the group as an Excel file.



Click on the PDF icon to export the group as a PDF file

CYLINDER HEAD - Group: 8021710120



**NOTE:** The user can go back to search page clicking on the “NEW SEARCH” button.

**NEW SEARCH**



## Search for a part number

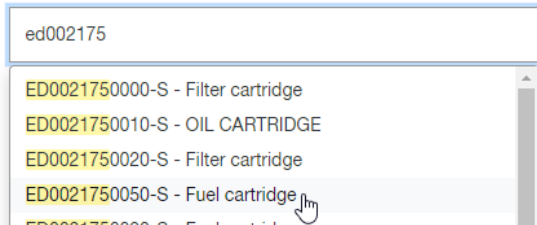
You can search by part number, description, engine type (gas/diesel), model or OEM (gas only).

As you start typing a part number, the system auto populates the possible results.

Click on the part to select it and then click on the search button

Enter EITHER or BOTH of the following:

Part number

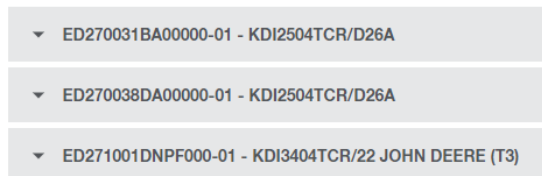


ed002175

- ED0021750000-S - Filter cartridge
- ED0021750010-S - OIL CARTRIDGE
- ED0021750020-S - Filter cartridge
- ED0021750050-S - Fuel cartridge
- ED0021750000-S - Fuel cartridge

The system shows the part and all engine specification where it is used and exploded view/part list related.

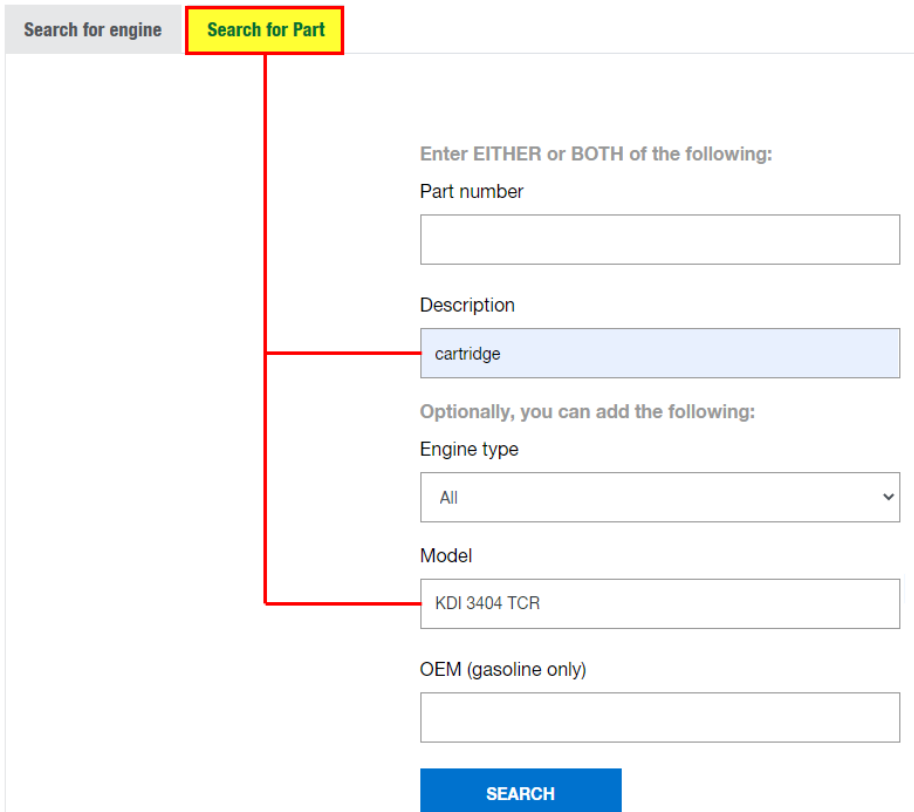
"ED0021750050-S - Fuel cartridge" used in:



- ED270031BA00000-01 - KDI2504TCR/D26A
- ED270038DA00000-01 - KDI2504TCR/D26A
- ED271001DNP000-01 - KDI3404TCR/22 JOHN DEERE (T3)

Click on "Search for Parts" tab, type a key word in the Description box, optionally some filters could be selected to have better results and click on "Search".

In the example below the key word is "cartridge" and the filter selected is an engine model



Search for engine   **Search for Part**

Enter EITHER or BOTH of the following:

Part number

Description

cartridge

Optionally, you can add the following:

Engine type

All

Model

KDI 3404 TCR

OEM (gasoline only)

SEARCH



Results page will show all parts which only contain “cartridge” in their description.  
Clicking on one of the results will show all engine specifications where used and the exploded view/part list related.

6 Results for “[cartridge](#) - [KDI 3404 TCR](#)”:

Part number	Description	Substitution
ED0021750050-S	Fuel <a href="#">cartridge</a>	
ED0021753090-S	Filter <a href="#">cartridge</a>	<a href="#">replaced by</a>

**NOTE:** The user can go back to search page clicking on the “NEW SEARCH” button.

